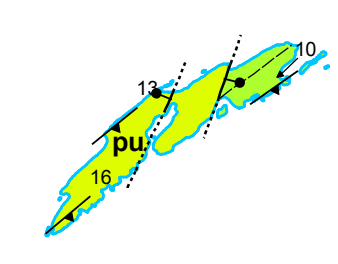
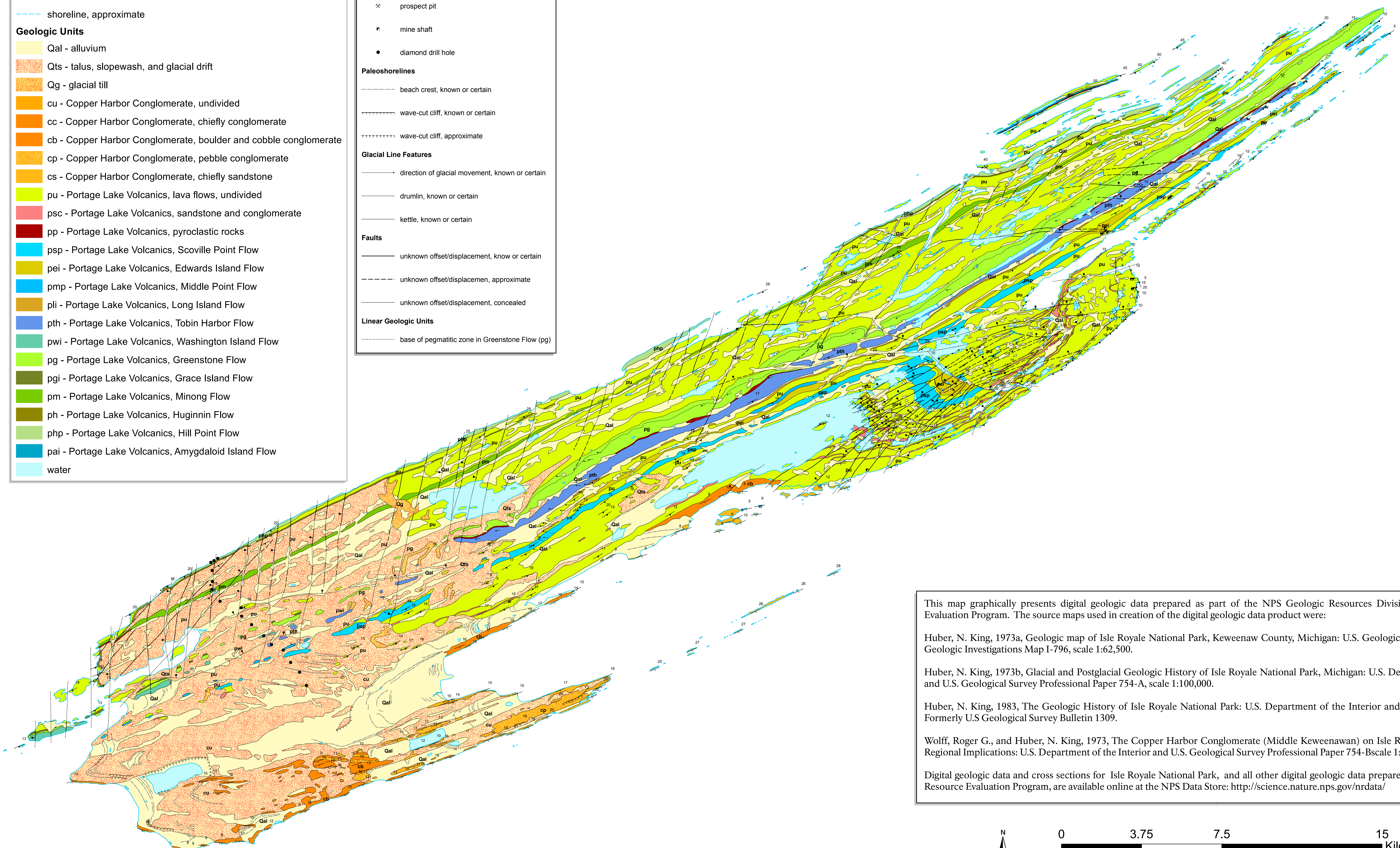
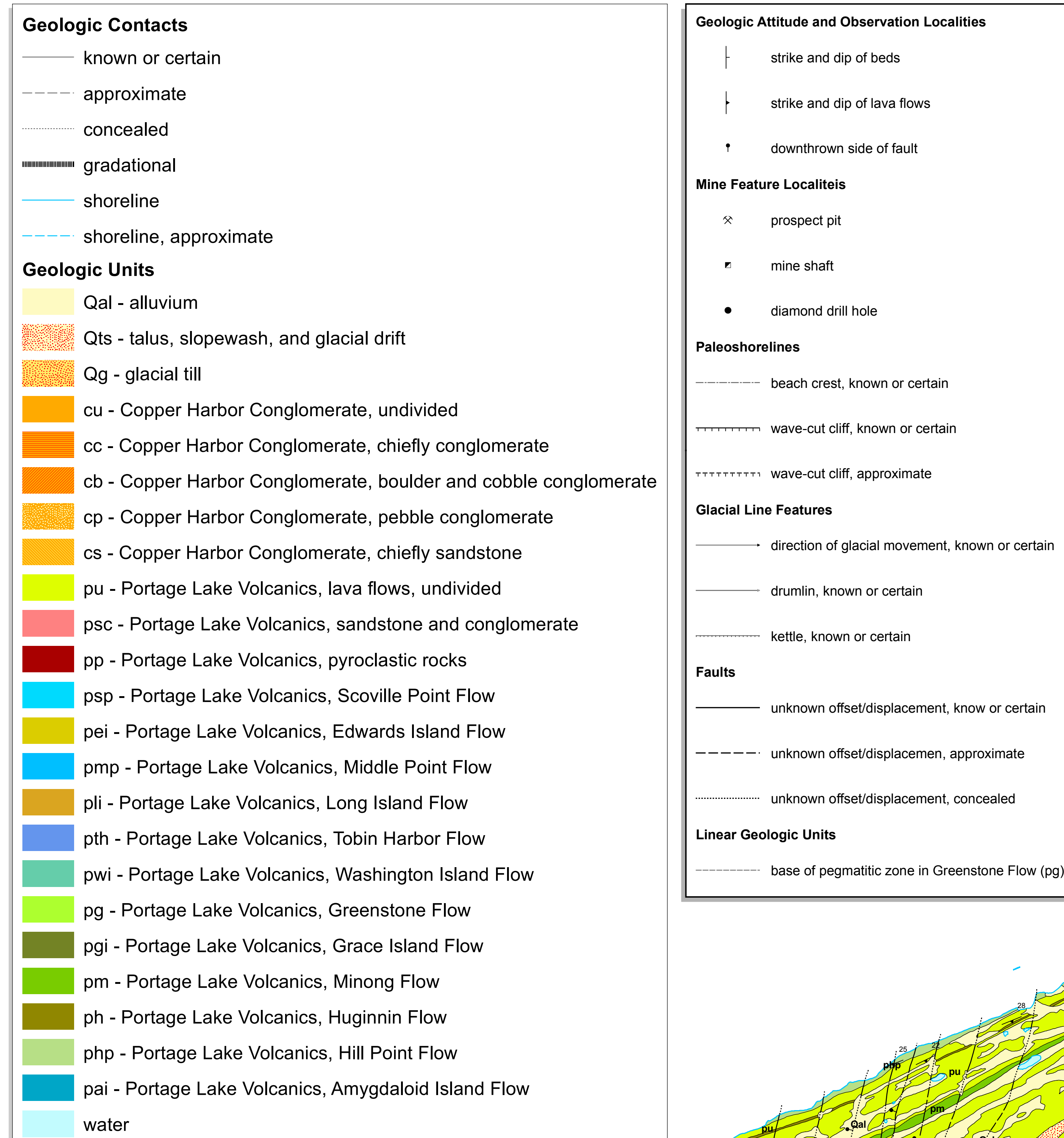




Geologic Map of Isle Royale National Park



This map graphically presents digital geologic data prepared as part of the NPS Geologic Resources Division's Geologic Resource Evaluation Program. The source maps used in creation of the digital geologic data product were:

Huber, N. King, 1973a, Geologic map of Isle Royale National Park, Keweenaw County, Michigan: U.S. Geological Survey Miscellaneous Geologic Investigations Map I-796, scale 1:62,500.

Huber, N. King, 1973b, Glacial and Postglacial Geologic History of Isle Royale National Park, Michigan: U.S. Department of the Interior and U.S. Geological Survey Professional Paper 754-A, scale 1:100,000.

Huber, N. King, 1983, The Geologic History of Isle Royale National Park: U.S. Department of the Interior and U.S. Geological Survey, Formerly U.S. Geological Survey Bulletin 1309.

Wolff, Roger G., and Huber, N. King, 1973, The Copper Harbor Conglomerate (Middle Keweenaw) on Isle Royale, Michigan, and its Regional Implications: U.S. Department of the Interior and U.S. Geological Survey Professional Paper 754-Bscale 1:62,500.

Digital geologic data and cross sections for Isle Royale National Park, and all other digital geologic data prepared as part of the Geologic Resource Evaluation Program, are available online at the NPS Data Store: <http://science.nature.nps.gov/nrdata/>

